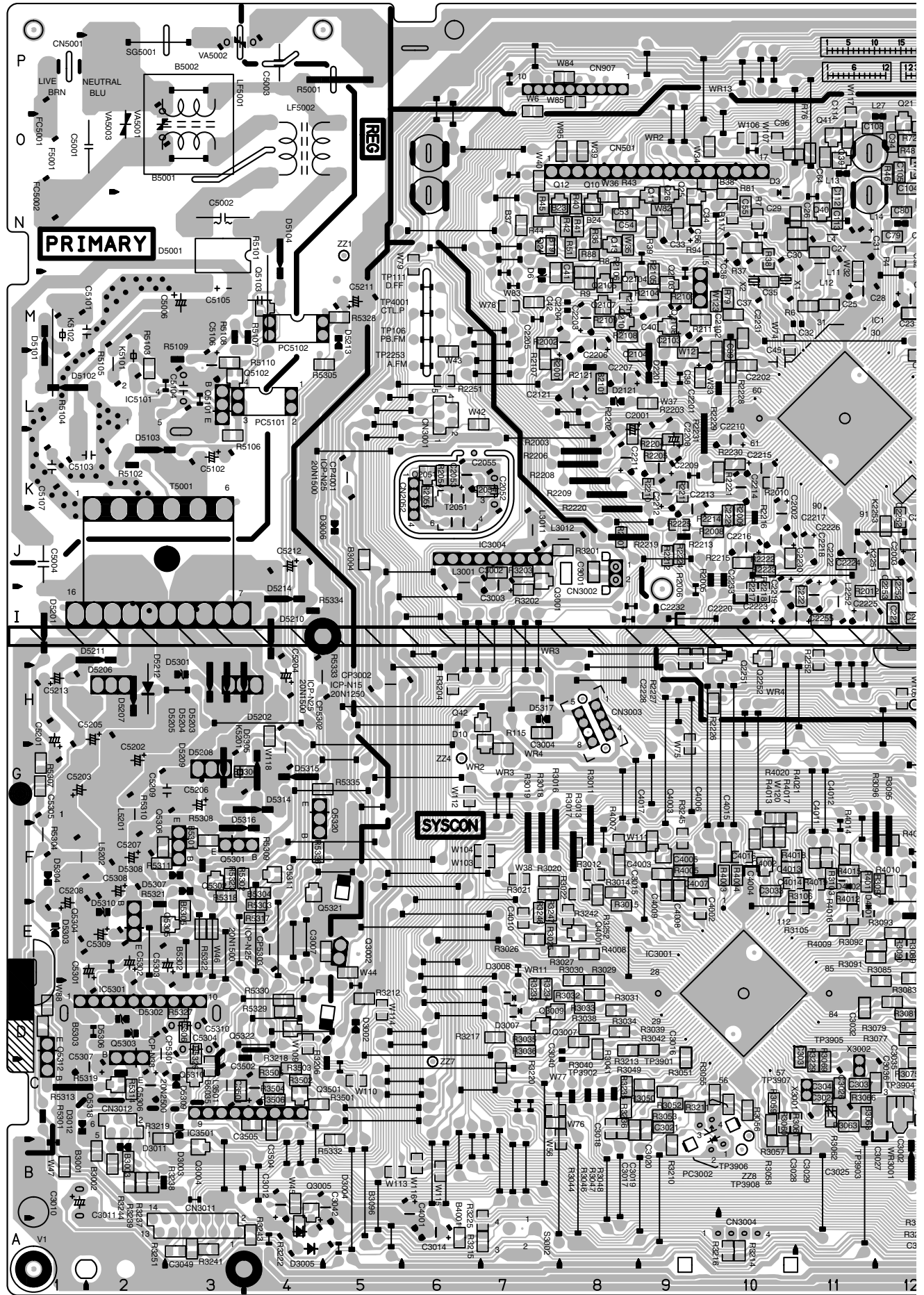
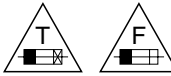


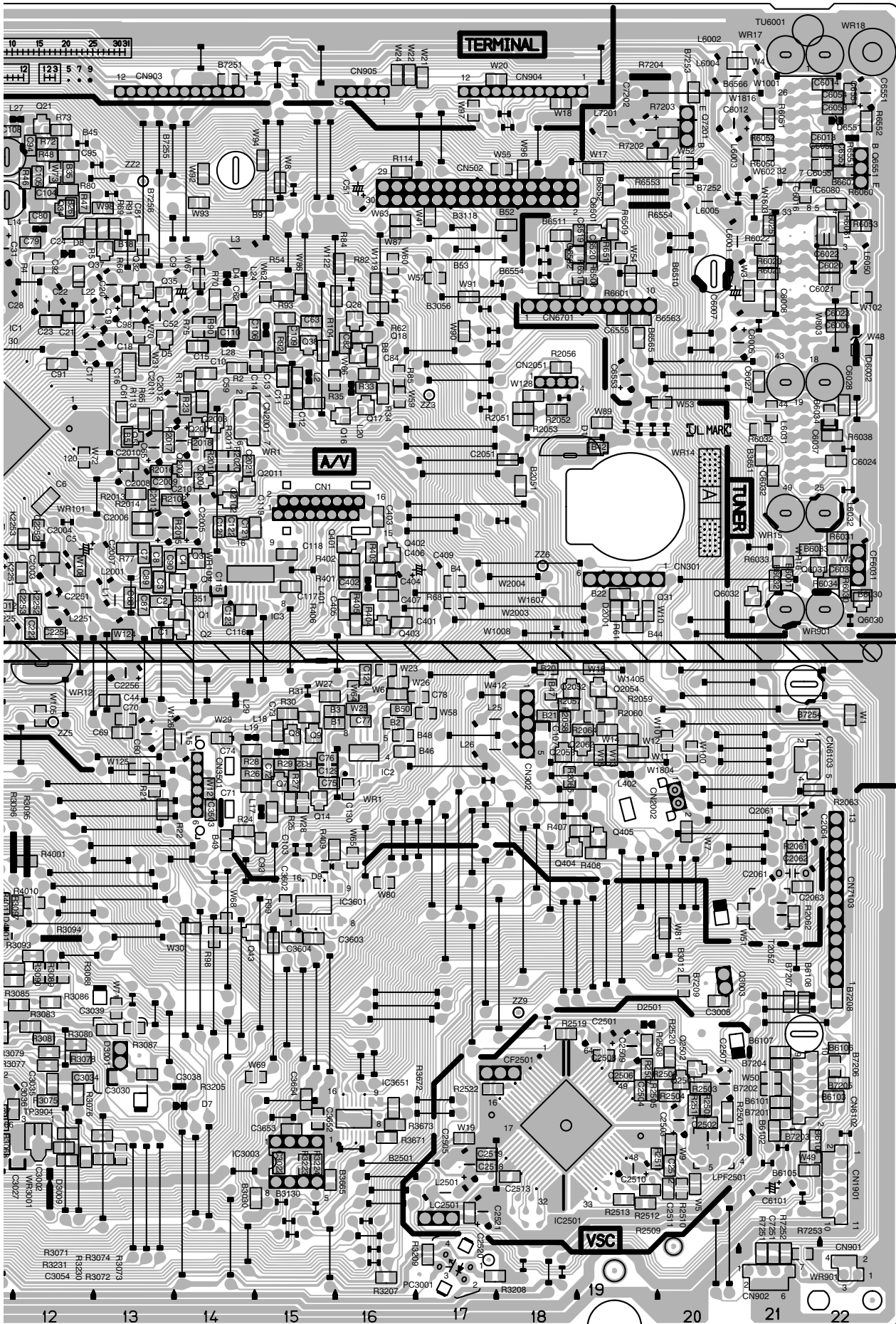
4.1 MAIN CIRCUIT BOARD

<03> MAIN
LPB10106-001D





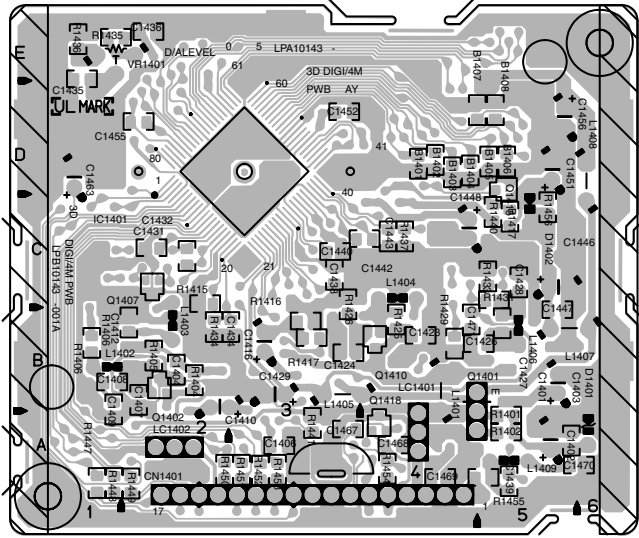
CAUTION :
 FOR CONTINUED PROTECTION AGAINST FIRE HAZARD, REPLACE ONLY WITH SAME TYPE AND RATED FUSE(S).
 FOR CONTINUED PROTECTION AGAINST FIRE HAZARD, REPLACE ONLY WITH SAME TYPE CP(S) MANUFACTURED BY ROHM.
 ATTENTION :
 REPLACER PAR DES FUSIBLE DE MEME TYPE.



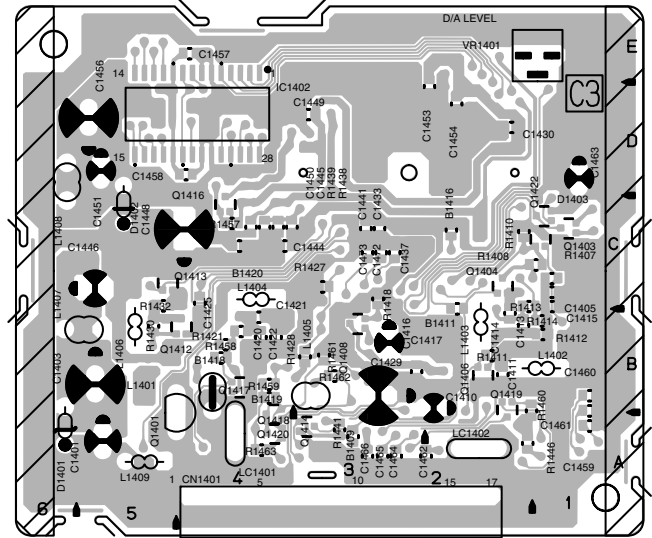
4.2 3D DIGITAL/4M CIRCUIT BOARD

<05> 3D DIGITAL/4M LPB10143-001A

FOIL SIDE(B)



COMPONENT SIDE(A)

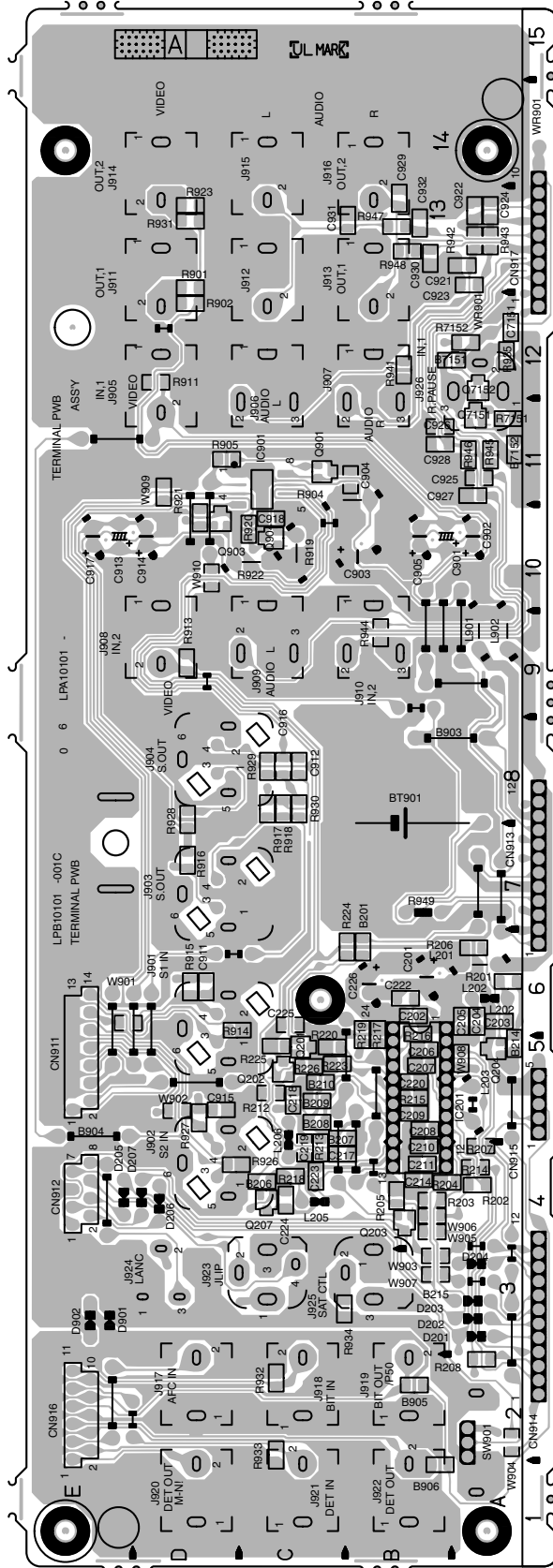


COMPONENT PART LOCATION GUIDE <3D DIGITAL/4M>

REF.NO.	LOCATION	REF.NO.	LOCATION	REF.NO.	LOCATION	REF.NO.	LOCATION	REF.NO.	LOCATION
CAPACITOR									
C1401	A D 5A	C1437	A C 3C	C1472	A C 3C	Q1415	B C 5D	R1434	B C 2B
C1402	B C 5A	C1438	B C 3C	C1473	A C 3C	Q1416	A C 4C	R1435	B C 1E
C1403	A D 5B	C1439	B C 5A	CONNECTOR				R1436	B C 1E
C1404	B C 2B	C1440	B C 3C	CN1401	A C 5A	Q1417	A C 4B	R1437	B C 4C
C1405	A C 1C	C1441	A C 3C	DIODE				R1438	A C 4C
C1406	B C 3A	C1442	B C 4C	D1401	A D 6B	Q1418	B C 4A	R1439	A C 4C
C1407	B C 2B	C1443	B C 4C	D1402	A D 5D	Q1419	A C 2B	R1440	B C 5C
C1408	B C 1B	C1444	A C 4C	D1403	A C 1C	Q1420	A C 4A	R1441	B C 3A
C1409	B C 1B	C1445	A C 4C	RESISTOR				R1442	A C C 3A
C1410	A D 2B	C1446	A D 5C	IC				R1446	A C C 2A
C1411	A C 2B	C1447	B C 5B	IC1401	B C 3D	R1401	B C 5B	R1447	B C 1A
C1412	B C 2B	C1448	A D 5C	IC1402	A C 4D	R1402	B C 5A	R1448	B C 1A
C1413	A C 2B	C1449	A C 3D	COIL				R1449	B C 2A
C1414	A C 2B	C1450	A C 4C	L1401	A D 5D	R1405	B C 2B	R1450	B C 2A
C1415	A C 1C	C1451	A D 5D	L1402	A D 1B	R1406	B C 1B	R1451	B C 3A
C1416	A D 3B	C1452	B C 3D	L1403	A D 2B	R1407	A C 1C	R1452	B C 3A
C1417	A C 3B	C1453	A C 2D	L1404	A D 4C	R1408	A C 1C	R1453	B C 3A
C1420	A C 4B	C1454	A C 2D	L1405	A D 4B	R1410	A C 2C	R1454	B C 4A
C1421	A C 4B	C1455	B C 2D	L1406	A D 5B	R1411	A C 2B	R1455	B C 5A
C1422	A C 4B	C1456	A D 5D	L1407	A D 6B	R1412	A C 1B	R1456	B C 5C
C1423	B C 4B	C1457	A C 5E	L1408	A D 6C	R1413	A C 2C	R1457	A C 4C
C1424	B C 3B	C1458	A C 5D	L1409	A D 5A	R1414	A C 1B	R1458	A C 4B
C1425	A C 4C	C1459	A C 1A	TRANSISTOR				R1459	A C 4B
C1426	B C 5B	C1460	A C 1B	Q1401	A D 5B	R1416	B C 3B	R1460	A C 1B
C1427	B C 5B	C1461	A C 1B	Q1402	B C 2B	R1417	B C 3B	R1461	A C 3B
C1428	B C 5C	C1462	A C 2A	Q1403	A C 1C	R1418	A C 3C	R1462	A C 3B
C1429	A D 3B	C1463	A D 1D	Q1404	A C 2C	R1421	A C 4B	R1463	A C 4A
C1430	A C 2D	C1464	A C 3A	Q1406	A C 2B	R1425	B C 4B	VR1401	A D 1E
C1431	B C 2C	C1465	A C 3A	Q1407	B C 2C	R1426	B C 3C	OTHER	
C1432	B C 2C	C1466	A C 3A	Q1408	A C 3B	R1427	A C 3C	LC1401	A D 4A
C1433	A C 3C	C1467	B C 3A	Q1410	B C 4B	R1428	A C 3B	LC1402	A D 2A
C1434	B C 2B	C1468	B C 4A	Q1412	A C 5B	R1429	B C 4B		
C1435	B C 1E	C1469	B C 4A	Q1413	A C 5C	R1430	A C 5B		
C1436	B C 2E	C1470	B C 6A	Q1414	A C 3A	R1431	B C 5C		
		C1471	B C 5B			R1432	A C 5C		
						R1433	B C 5C		

4.3 TERMINAL CIRCUIT BOARD

<06> TERMINAL LPB10101-001C

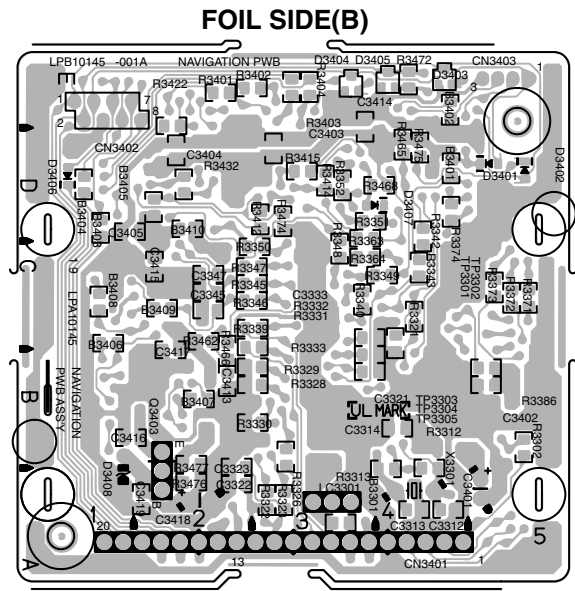
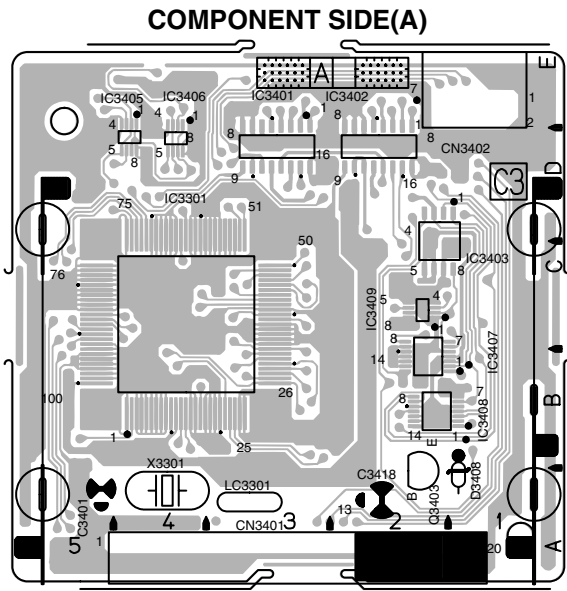


COMPONENT PART LOCATION GUIDE <TERMINAL>

REF.NO.	LOCATION	REF.NO.	LOCATION	REF.NO.	LOCATION	
CAPACITOR						
C201	A D	J904	A D	R918	B C	
C202	B D	J905	A D	R919	A D	
C203	B C	J906	A D	R920	B C	
C204	B C	J907	A D	R921	B C	
C205	B C	J908	A D	R922	A D	
C206	B C	J909	A D	R923	B C	
C207	B C	J910	A D	R926	B C	
C208	B C	J911	A D	R927	B C	
C209	B C	J912	A D	R928	B C	
C210	B C	J913	A D	R929	B C	
C211	B C	J914	A D	R930	B C	
C214	B C	J915	A D	R931	B C	
C217	B C	J916	A D	R932	B C	
C218	B C	J917	A D	R933	B C	
C219	B C	J918	A D	R934	B C	
C220	B C	J919	A D	R935	B C	
C222	B C	J920	A D	R941	B C	
C223	B C	J921	A D	R942	B C	
C224	B C	J922	A D	R943	B C	
C225	B C	J923	A D	R944	B C	
C226	A D	J924	A D	R945	B C	
C901	A D	J925	A D	R946	B C	
C902	A D	J926	A D	R947	B C	
C903	A D	COIL			R948	B C
C904	A D	L201	A D	R949	A D	
C905	A D	L202	A D	R7151	B C	
C911	B C	L203	A D	R7152	B C	
C912	B C	L205	A D	OTHER		
C913	A D	L206	A D	BT901	A D	
C914	A D	L901	A D	SW901	A D	
C915	B C	L902	A D	WR901	A D	
C916	B C	TRANSISTOR				
C917	A D	Q201	B C			
C918	B C	Q202	B C			
C921	B C	Q203	B C			
C922	B C	Q204	B C			
C923	B C	Q207	B C			
C924	B C	C901	B C			
C925	B C	C903	B C			
C926	B C	C904	B C			
C927	B C	Q7151	B C			
C928	B C	Q7152	B C			
C929	B C	RESISTOR				
C930	B C	R201	B C			
C931	B C	R202	B C			
C932	B C	R203	B C			
C7151	B C	R204	B C			
CONNECTOR						
CN911	A D	R205	B C			
CN912	A D	R206	B C			
CN913	A D	R207	B C			
CN914	A D	R208	B C			
CN915	A D	R212	B C			
CN916	A D	R213	B C			
CN917	A D	R214	B C			
DIODE						
D201	A D	R215	B C			
D202	A D	R216	B C			
D203	A D	R217	B C			
D204	A D	R218	B C			
D205	A D	R219	B C			
D206	A D	R220	B C			
D207	A D	R223	B C			
D901	A D	R224	B C			
D902	A D	R225	B C			
IC						
IC201	A D	R226	B C			
IC901	B C	R901	B C			
JACK						
J901	A D	R902	B C			
J902	A D	R904	A D			
J903	A D	R905	B C			
		R911	B C			
		R913	B C			
		R914	B C			
		R915	B C			
		R916	B C			
		R917	B C			

4.4 NAVIGATION CIRCUIT BOARD

<19> NAVIGATION LPB10145-001A



COMPONENT PART LOCATION GUIDE <NAVIGATION>

REF.NO.	LOCATION	REF.NO.	LOCATION	REF.NO.	LOCATION	REF.NO.	LOCATION	REF.NO.	LOCATION
CAPACITOR		DIODE		R3321	B C 4C	R3373	B C 5C	TP3304	B C 5C
C3312	B C 4A	D3401	B C 5D	R3322	B C 3A	R3374	B C 4D	TP3305	B C 5C
C3313	B C 4A	D3402	B C 5D	R3323	B C 3A	R3386	B C 5B	X3301	A D 4A
C3314	B C 4B	D3403	B C 4E	R3326	B C 3B	R3401	B C 2E		
C3321	B C 4C	D3404	B C 3E	R3328	B C 3B	R3402	B C 3E		
C3322	B C 2A	D3405	B C 4E	R3329	B C 3B	R3403	B C 3E		
C3323	B C 2B	D3406	B C 1D	R3330	B C 3B	R3404	B C 3E		
C3333	B C 4C	D3407	B C 4D	R3331	B C 4B	R3412	B C 3D		
C3345	B C 2C	D3408	A D 1A	R3332	B C 4C	R3414	B C 3D		
C3346	B C 2C			R3333	B C 3C	R3415	B C 3D		
C3347	B C 2C	IC		R3339	B C 3C	R3422	B C 2E		
C3401	A D 5A	IC3301	A C 4C	R3340	B C 4C	R3432	B C 2D		
C3402	B C 5B	IC3401	A C 3D	R3342	B C 4D	R3462	B C 2C		
C3403	B C 3D	IC3402	A C 2D	R3343	B C 4C	R3465	B C 4D		
C3404	B C 2D	IC3403	A C 2D	R3345	B C 3C	R3466	B C 2C		
C3405	B C 1D	IC3405	A C 4D	R3346	B C 3C	R3468	B C 4D		
C3413	B C 2B	IC3406	A C 4D	R3347	B C 3C	R3472	B C 4E		
C3414	B C 4E	IC3407	A C 2B	R3348	B C 3C	R3474	B C 3D		
C3415	B C 2C	IC3408	A C 2B	R3349	B C 4C	R3475	B C 4D		
C3416	B C 2B	IC3409	A C 2C	R3350	B C 3C	R3476	B C 2A		
C3417	B C 2C			R3351	B C 4D	R3477	B C 2B		
C3418	A D 2A	TRANSISTOR		R3352	B C 3D	OTHER			
C3419	B C 2A	Q3403	A D 2B	R3363	B C 4D	LC3301	A D 3A		
		RESISTOR		R3371	B C 5C	TP3301	B C 4C		
		R3302	B C 5B	R3372	B C 5C	TP3302	B C 4C		
CN3401	A D 4A	R3312	B C 4B			TP3303	B C 5C		
CN3402	A D 1E	R3313	B C 4A						